



# CINCHADO GOLD PROJECT Los zorros property, Chile

## Plate 3

Please use Adobe Reader "Marquee Zoom" tool to view picture and map details

C3

### CROSS-SECTION C3-C3' THROUGH SAN PEDRO MINE - L6 MINE

C3'

#### PROXIMAL ZONE

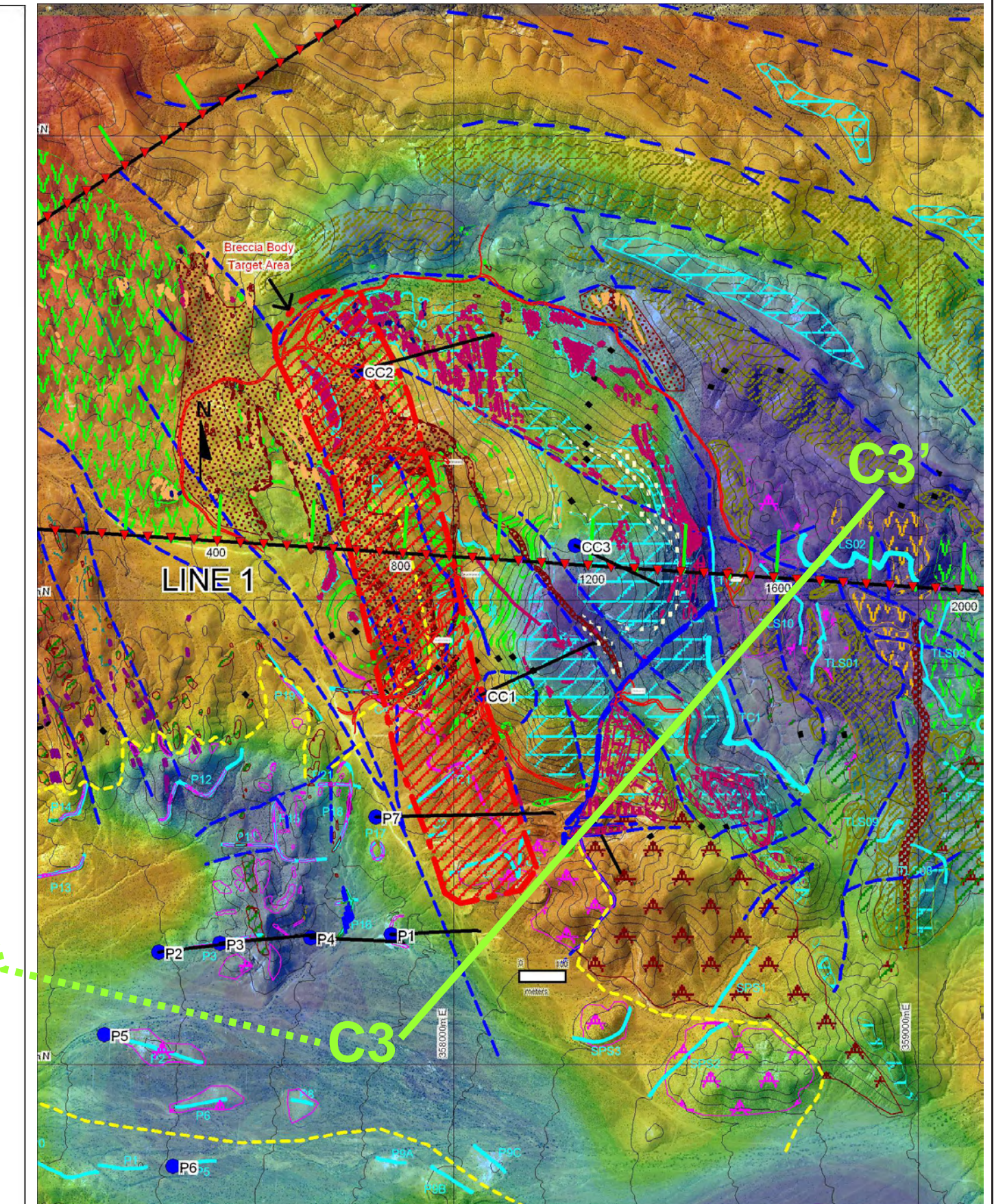
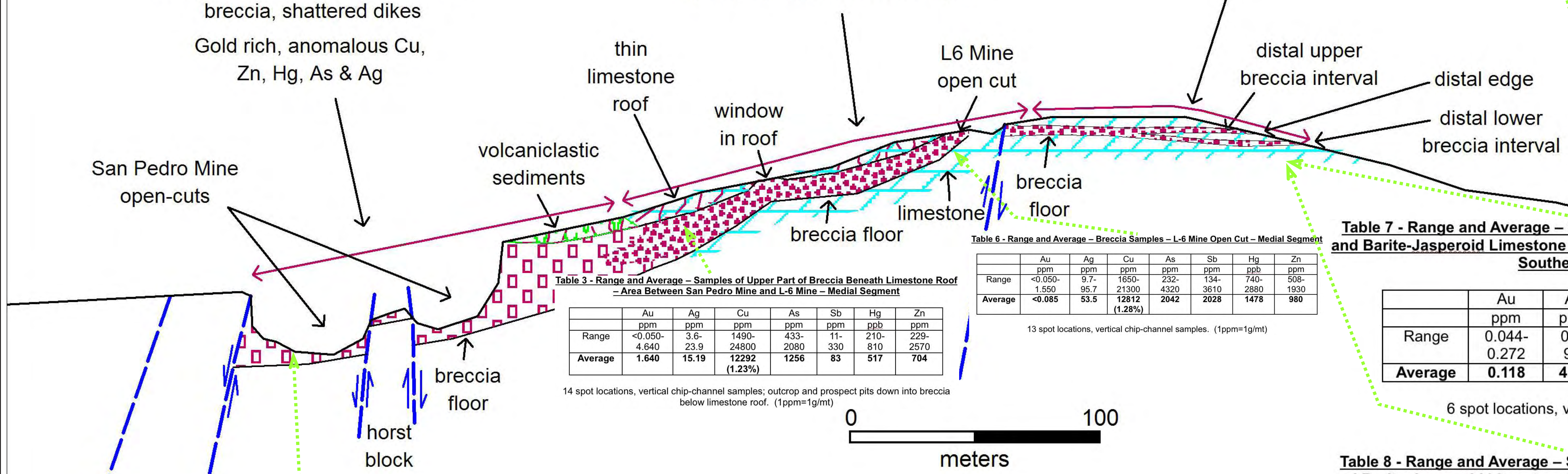
SAN PEDRO MINE (open cut)  
+40 m thick breccia,  
large blocks-  
chaotic collapse character  
polyolithic clasts: jasperoid,  
limestone, diorite,  
feldspathic volcanoclastic sediment;  
breccia, shattered dikes  
Gold rich, anomalous Cu,  
Zn, Hg, As & Ag

#### MEDIAL ZONE

L-6 MINE  
7-10 m thick  
small breccia-packed clasts,  
solution breccia-local  
collapse breccia, dominantly  
limestone, minor jasperoid,  
feldspathic volcanoclastic sediment,  
local barite infill  
Copper-silver rich, anomalous  
Hg, As, Sb, local anomalous gold

#### DISTAL ZONE

3-4 m thick  
jasperoid replacement of  
limestone layers and  
brecciated limestone with abundant  
coarse-bladed barite infill  
Anomalous Hg & As, moderate to weakly  
anomalous Ag & Cu, negligible gold content



**Table 3 - Range and Average - Samples of Upper Part of Breccia Beneath Limestone Roof - Area Between San Pedro Mine and L-6 Mine - Medial Segment**

	Au	Ag	Cu	As	Sb	Hg	Zn
	ppm	ppm	ppm	ppm	ppm	ppb	ppm
Range	<0.050- 4.640	3.6- 23.9	1490- 24800	433- 2080	11- 330	210- 810	229- 2570
Average	1.640	15.19	12292 (1.23%)	1256	83	517	704

14 spot locations, vertical chip-channel samples; outcrop and prospect pits down into breccia below limestone roof. (1ppm=1g/mt)

**Table 6 - Range and Average - Breccia Samples - L-6 Mine Open Cut - Medial Segment**

	Au	Ag	Cu	As	Sb	Hg	Zn
	ppm	ppm	ppm	ppm	ppm	ppb	ppm
Range	<0.050- 1.550	9.7- 95.7	1650- 21300	232- 4320	134- 3610	740- 2880	508- 1930
Average	<0.085	53.5	12812 (1.28%)	2042	2028	1478	980

13 spot locations, vertical chip-channel samples. (1ppm=1g/mt)

**Table 7 - Range and Average - Samples of "Lower" Breccia Interval - Jasperoid Mantos and Barite-Jasperoid Limestone Breccia - Sample Locations On Northeast Side of Ridge - Southeast of L-6 Mine - Distal Segment**

	Au	Ag	Cu	As	Sb	Hg	Zn
	ppm	ppm	ppm	ppm	ppm	ppb	ppm
Range	0.044- 0.272	0.9- 9.6	371- 9120	245- 7680	11- 465	90- 260	51- 933
Average	0.118	4.86	4975	1882	168	162	476

6 spot locations, vertical chip-channel samples. (1ppm=1g/mt)

**Table 8 - Range and Average - Samples of "Lower" Breccia Interval - Jasperoid Mantos and Barite-Jasperoid Limestone Breccia - Sample Locations On Southwest Side of Ridge - Southeast of L-6 Mine - Distal Segment**

	Au	Ag	Cu	As	Sb	Hg	Zn
	ppm	ppm	ppm	ppm	ppm	ppb	ppm
Range	<0.050- 0.480	2.5- 7.7	1075- 5170	178- 932	<2- 86	370- 750	198- 252
Average	0.233	5.3	2695	454	40	547	226

4 spot locations, vertical chip-channel samples. (1ppm=1g/mt)

**Table 1 - Range and Average - Breccia Samples - San Pedro Mine - Proximal Segment**

	Au	Ag	Cu	As	Sb	Hg	Zn
	ppm	ppm	ppm	ppm	ppm	ppb	ppm
Range	0.037- 9.5	0.2- 10.0	146- 4940	49- 2120	<2- 108	40- 1380	20- 2190
Average	1.905	2.2	963	724	<5	511	484

71 continuous horizontal chip-channel samples around walls of pits. (1ppm=1g/mt)